

www.algs.org.uk
email – contactus@algs.org.uk

Secretary Mrs Jane Lay, The Gleanings, Marlin Square, Abbots Langley, WD5 OEG
01923 447281 email leon.lay@ntlworld.com

AUGUST / SEPTEMBER 2011 NEWSLETTER

AUTUMN SHOW

SEPTEMBER 10TH

IN THE ABBOTS LANGLEY COMMUNITY CENTRE

Open 2.30 to 5pm

BEEKEEPING – PROGRESS REPORT

Well our beekeeping project is making good progress. We bought the kit and all the necessary accessories for the Society's hive on the Thursday evening before the Carnival and Chris spent most of Friday constructing it. At the Abbots Langley Carnival we had our new hive on display and were overwhelmed by the amount of interest people showed in it. We were able to show how the bees lived and worked within their hive, as well as telling our visitors about the need for everyone to help our bees in their fight for survival. Of course, not everyone wants or is able to keep bees, but we can all grow something in the garden or in a window box or hanging basket that bees will feed on and pollinate for us.

Quite a few visitors to our carnival stall were beekeepers, would-be beekeepers, ex-beekeepers or knew someone who was a beekeeper, and Chris and I were busy all afternoon getting advice, giving advice, networking and encouraging support for the bees. A number of people have said to me that they could not get near to the stall when they passed by so we apologise if you wanted to talk to us but didn't get the opportunity. Before we got our first nucleus of bees, there was more work to be done. Chris built the stand for our hive and one evening we started putting together the kits for the brood frames – where the bees build cells in which the queen bee lays her eggs to breed the workers and drones to build up the colony to full working capacity (approximately 60,000 bees per hive). At this time of year we don't expect the bees to produce more queens, but you never know! The eggs hatch and the larvae develop into workers, drones or queens according to the food they are given by the worker bees.

Once the hive was in place with all the frames ready and waiting, our nucleus was delivered and the bees installed in their new home. We have had a working party get together to build more frames and a few brave committee members have come to see the hive. We are not expecting the bees to provide enough honey for us

this year – the weather has been difficult for them and we have had to feed the new brood sugar syrup to get them settled in. However sometime in 2012 we are hoping to .

If you have any questions about the project or about beekeeping, use our contactus link and keep checking out our website to find out what's happening. Kate Macnish

CARNIVAL

A BIG THANK YOU to all of you who provided plants for our carnival stall. An extra BIG THANK YOU to those of you who made the effort to give us a hand behind the counter selling the plants. We were so lucky with the weather, in fact it was much hotter than any of us thought it would be. I think nearly every plant had a label on it which makes such a difference otherwise we have to guess what the plant is or look it up in our gardening books.

We took another record in sales!! £730.27 (£114 up on last year)!! Our plant raffle took £57 thanks to the generosity of Burston's. Amazing!!

Saturday Breakfast BBQ at the Depot on Saturday 2nd July

We had an excellent BBQ on a beautiful hot sunny morning while watching Chris slave over the hot BBQ! Did you join us? Don't miss the next one!

SEED ORDERS

Our seed catalogues from Mr Fothergill's Seeds will be received in September/October. Again we will be offering 40% off seeds and 10% off all other goods and plants.

WEB SITE – www.algs.org.uk

Our web site has lots of useful information and we are regularly updating the site. If you want to contact us by email use - contactus@algs.org.uk.

Maybe you want to sell something, email us on contactus@algs.org.uk and we can sell it for you or let Jane know on leon.lay@ntlworld.com and she can put it in the Newsletter. Don't forget not everyone has an email address. (01923 447281)

DO YOU HAVE A PARISH COUNCIL ALLOTMENT? IF SO PLEASE EMAIL ME TO LET ME KNOW WHERE FOR MY RECORDS. Thank you.

EMAIL ADDRESSES

If you change your email address please let me know as well on leon.lay@ntlworld.com

NEW ALLOTMENTS SITE

It has been agreed by the Parish Council to proceed with a new site down at Primrose Hill Playing fields. Work to prepare the site should commence over the winter time if the Three Rivers District Council give the green light on the project. The opening up of another site will ease the waiting list of around 2 years as well as give the opportunity to those people from that part of the parish to grow their own vegetables.

If you are interested in having an allotment in this part of the parish please contact the Parish Council as soon as possible.

Plans are also being made to have a Community Orchard on this site. Do you have any interest in this project? Are you willing to run and look after such a project for the Parish?

ALLOTMENTS FOR ABBOTS LANGLEY PARISH RESIDENTS ONLY

Would you like an allotment to grow your vegetables on?

The season runs from October to September. You can get whole plots, ½ plots and ¼ plots. There are 3 sites – Jacketts Field (Rep Sally Sanderson), Manor House (Rep Chris Bromwich) and Kingsfield (Rep Les Clarke). Look on the Parish Council web site for more information

www.abbotslangley-pc.gov.uk or speak to the Reps or phone the Parish Council office on 01923 265139. If you are already on the waiting list don't forget to keep phoning or visiting the PC to check whether your name is nearing the top of the list.

MEMBERSHIP RENEWALS

WOULD YOU LIKE TO PAY BY STANDING ORDER? This is a much easier way of paying your subscription and will guarantee you pay the lower rate of subscription, so please contact Myles on 262685 or myles11@talktalk.net who will give you the bank details necessary to set this up.

MANURE

From our Depot – horse manure per bag

For delivery -

Dave Birkin Tel: 01442 832997 - £35 for a 5 tonne load. It is a mixture of horse and cow manure and is 18 months old.

For collection – don't forget to take your fork/spade and bags

a. Mansion House stables (opposite the AL School entrance on the Bedmond Road) also provides horse manure for free to collect. You have to go there when someone is working at the stables and ask if you can take some. They usually will be pleased to see you!

b. There is a house on the right hand side going down Chequers Lane, before the bridge, where you can acquire manure.

c. There are stables run by Debbie Randall (07721327763) on the A405 on the same side as Burston's. Due to the dual carriage way you need to go past Burston's, over the next small roundabout to the big M10 roundabout, come back on yourself about 100yds BEFORE you reach the next small roundabout (Park Street/Tippendell Lane) the stables are on the left hand side. The stables are usually open each afternoon between 2 – 3.30pm and often on Saturday mornings. The manure is usually well matured. Note you must telephone Debbie BEFORE you go as she is not always there.

REMEMBER YOU WILL BE ASKED TO SHOW YOUR MEMBERSHIP CARD WHEN PURCHASING AT THE DEPOT

WANTED – empty 1lb size jam jars. Please leave in depot for collection or in my porch.

Did You Count the Butterflies in your garden at the end of July?

FLOWERS FOR ALL OCCASIONS

For flower arrangements for any occasion at prices below the florist shops contact Jo Bromwich on 01923 443758. Note -Jo does not provide flowers only.

DEPOT DUTIES – 8.45 to 10am

If you make a mutually agreed swap, please don't forget to let Pat Colwell know so that he can keep an accurate record. Being on duty involves 1 hour's duty on a Saturday morning, only once or twice a year. There will always be a Committee Member on hand, to give guidance. Many hands make light work! So if you are willing to join the list of volunteers to help serve in the Depot, please let either Jane (447281) or Pat (443721) know and Pat can add you to the list if there is a cancellation by someone.

DUTY ROTA (correct at going to print)

August

06-Chris Bromwich, Sue Douglas, John Beaumont

13-Myles Darbyshire, Vince Watts, Julia Pink

20-Pat Colwell, John Tapster, Malena Stratton

27-Jane and Leon Lay, Keith Robertson

September

03-Sue North, John Noonan, Paul Rennell

10-Jeremy Foster, Olive Reeder, Anne Richardson

17-Bryan Ellis, John and Brenda Kersey

24-David Sutherland, Pauline Bryant, Victoria Underwood

October

01-Bryan Ellis, Olive Dollard, Eve Durtnall

08-Kate Macnish, Roy Jenner, Caron Williams

15-John Merry, Joyce Davies, David Lovell

22-Jo Bromwich, Roger Gotts, Susan Harris

29-Jeremy and Barbara Foster, Carol Kettle

November

05-Sue North, Bella Stuart-Smith, Norman Meldrum

12-Myles Darbyshire, Jan Always, Jo Domaniewska

19-Jane Lay, Sally Sanderson, Peter Barnes

26-Chris Bromwich, John and Anne Cox

December

03-Pat Colwell, Brian Hibberd

10-Chris Bromwich, Alan Wragg

17-David Sutherland, Jennifer Grumbridge

24- CLOSED

31-Kate Macnish, Roger Silvester

TRAVEL CLUB 2011 – HAVE YOU BOOKED YOUR SEAT YET?

23 - 26 September 2011: The Lady Gardeners of Northumberland – This trip has also been organised specifically for the Gardening Society. A coach will pick us up from Abbots Langley and take us to our 4* hotel in Durham – our base for the weekend. Day 2 begins with a visit to Garden Cottage at Bolam Hall, where plants woman Heather Russell has created plant tapestries and garden features, then on to the Manor House, a charming English country house garden with a history which features contributions from Gertrude Jekyll and Edwin Lutyens. Penny Norton has inherited all kinds of interesting plants which she has succeeded in propagating for her fragrant garden. Day 3 we will travel to Alnwick for a visit to the Alnwick Garden. This unique garden project was inspired by the Duchess of Northumberland, with a contemporary, ever-changing composition of sights, sounds, smells and textures. The garden project is nearing completion and has already established itself as a major attraction. When finished, Alnwick Garden will be one of the greatest gardens of our time. From there we go on to visit to Mindrum, a large and generous garden cascading down a hillside, to a clear stream. The garden has been created by Ginny Fairfax. Day 4 we travel to Crook Hall Gardens in Durham. Crook Hall is a Grade I listed Medieval Manor House with a 13th century banqueting hall. The gardens include The Secret Walled Garden, the Shakespeare Garden, and the Cathedral Garden. Following this visit, we then travel home.

From £475 including coach travel throughout the weekend, 4* hotel accommodation (dinner, bed & breakfast) and entrance fees. Kate has booking forms for this trip. If you have any queries, please telephone or email Kate – 07880813737 or kate.macnish@btinternet.com

ROSES

The Chiswell Green Gardens were open for the general public from 11 June to 31 July. Did you go along as I did not get many takers for the free pass for 4 people? We went in July and some of the blooms were coming to end as they all started flowering early this year. The second flush of blooms should be any time now. As an affiliate member we can visit any time during office hours and if you want to go the days are Tuesday, Wednesday Thursday 9am to 5pm. There is no charge as we hold a double membership for 4 visitors to go to the gardens. Please telephone (447281) me in advance

to book the ticket in case it has already been taken. As far as I know the tea room will not be open, but you could then proceed round to the Butterfly World to have a look round there and enjoy their food, but we DO NOT have a free or discount pass. Every year the gardens get better as they mature so I am sure you will want to visit sometime in the summer.

AUTUMN SHOW

There will be plenty of Show Schedules in the Depot and in my porch for you to pick up if you have not one already. The front cover is Blue. If you are on the web you can print it off from our web site to save the Society money in printing costs. I have produced a Tips for Showing guide and this will also be at the Depot and in my porch. The recipes will also be in the Depot and my porch for collection.

If you won a trophy last Autumn Show, please return it to me now.

We do hope that you will support your Society as before and we always look forward to seeing new exhibitors.

We are always pleased to receive donations of plants and jams to sell at the Show.

The children's painting competition sheets are in my porch and Depot for collection. Please encourage your children/grandchildren to enter in any of the classes colouring – cooking – photography etc.

ABBOTS LANGLEY TRANSITION GROUP

After the very successful event last March, they are putting on a food fair in the Henderson Hall Saturday September 17th between 10.30-12.00 noon

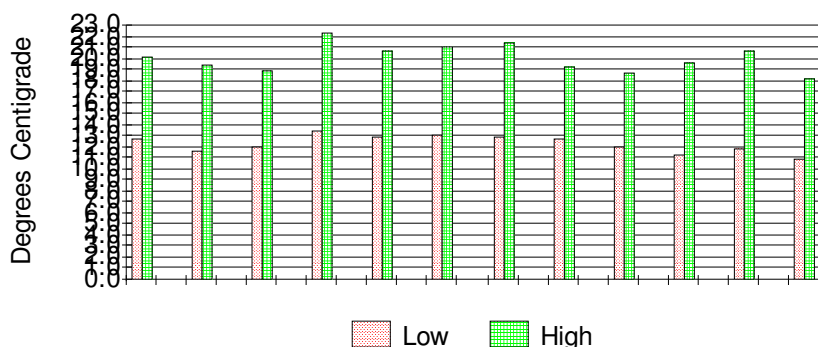
WE WILL BE THERE SO COME AND SEE US. WE NEED YOUR SUPPORT TO SUPPLY PLANTS, CAKES, AND JAMS. See the new Newsletter for more information.

The predominant aim of this event is to highlight how much food is already being produced in Abbots Langley, encourage those who are doing this and to help people who are not involved in producing food for whatever reason to consider learning. They believe that if a low fossil fuel dependent future is inevitable we will need to be producing more of our own food and therefore it is very important that we prepare for it. The good news is that this preparation is very enjoyable and empowering!

DON'T FORGET TO MAKE SURE YOUR DAHLIAS HAVE LABELS ON THEM BEFORE THE FROSTS COME BACK!!!

12 Years compared 1999 - 2011

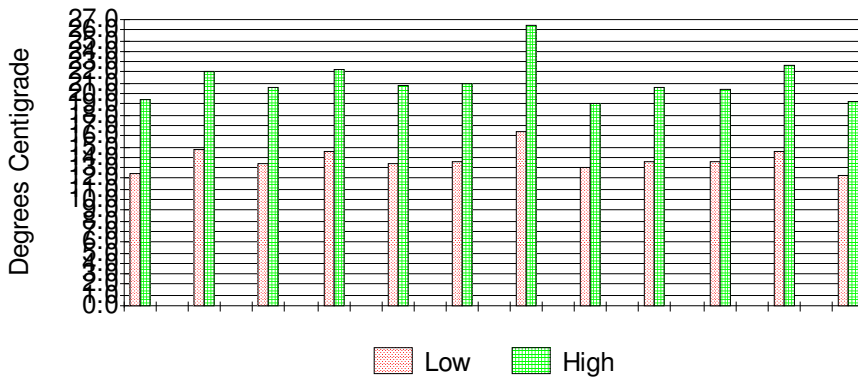
Average June temperatures



Both day and night averages were the coldest of the twelve years. There were two days with a temperature of 28° - the hottest since July 2006. However, only seven days had temperatures of over 20°, compared to last year's 14 days.

12 Years compared 1999 - 2011

Average June temperatures



The coolest (if it had been winter “coldest”) month of the 12 years. Just one of the 24 results is lower than this year – by 0.2 degrees!

WHAT TO DO NOW AROUND YOUR GARDEN

Deadhead pelargoniums and other summer bedding plants

Summer prune wisteria, cutting back whippy sideshoots to about 20cm

Water plants in pots and baskets

Take cuttings from shrubs choosing non-flowering shoots

Collect seed from flowers that you want to propagate including aquilegia, polemonium and foxgloves

Identify rose problems and pick off diseased leaves

Prune philadelphus, weigela and other early summer-flowering shrubs

Propagate lily bulbs by taking off a few outer scales and putting them in bags of compost and perlite, or by potting up bulbils formed on their stems

Check sweetcorn to see if it's ripe and ready to pick. This is when the tassels start to go brown

Pick beans and water and feed crops regularly

Lift onions once their tops die down and leave in the sunshine to ripen

Pick plums as they ripen

Use netting to protect blackberries, autumn raspberries and other berries from birds. Keep an eye on the netting in case a bird gets caught up in it.

Cut out fruited canes of summer raspberries

Pile up the earth around trench varieties of celery for whiter stems

Pick 'Discovery' and other early ripening apples

Prune blackcurrants after fruiting, removing about a quarter of the oldest stems

Transplant well-rooted strawberry runners or put into pots to put into the ground in the autumn.

Buy pansies and other winter bedding plug plants to grow on under cover

Damp down the greenhouse floor every morning on hot days

Water plants in pots and growing bags every morning, and again at night if necessary

Add liquid feed to at least one watering a week to keep plants growing strongly

Be vigilant for pests like red spider mite and take action against any right away

Buy narcissus, hyacinths and lillies to plant for indoor displays

Sow poor man's orchid (schizanthus) to produce flowering houseplants

Thin bunches of dessert grapes and spray vines to ward off diseases

PROGRAMME FOR SOCIAL EVENINGS AND OTHER EVENTS IN 2011

Held in the Manor House Sports & Social Centre, Gallows Hill Lane, Abbots Langley (opposite Popes Road)

Meetings start at 8pm
(unless otherwise stated)
Doors open at 7.40pm

If you have any ideas for future talks please contact Jo Bromwich on 01923 443758

SEPTEMBER 10 AUTUMN SHOW in the AL Community Centre
SEPTEMBER 15 Russell Bowes talk on "Dig for Victory"

OCTOBER 20	Martin Brooks – "Life as a Park Ranger in Abbots Langley"
NOVEMBER 17	Rob Hopkins – "The work of Herts & Middx Wildlife Trust"
NOVEMBER 25	QUIZ NIGHT in the Manor House
DECEMBER 15	Ferret Racing!!! (TBC)

GUESTS ARE ALWAYS WELCOME – guest entrance £1

Abbots Langley Travel Club 2011:

- Long weekend in Northumberland - 23-26 September 2011
Contact Kate Macnish on kate.macnish@btinternet.com or 07880813739

2012 - A trip to the Floriade in Venlo Holland is proposed. This is held every 10 years and we are planning to go in May although it runs from 5th April to 7 October.
Have you any ideas for Kate as to where you would like to visit in England??