

www.algs.org.uk  
email – [contactus@algs.org.uk](mailto:contactus@algs.org.uk)

Secretary Mrs Jane Lay, The Gleanings, Marlin Square, Abbots Langley, WD5 OEG

## **FEBRUARY/MARCH 2012** **NEWSLETTER**

### QUIZ NIGHT FRIDAY FEBRUARY 24<sup>TH</sup>

Held in the Manor House  
Tickets cost £10 each  
Including fish or chicken and chips  
BOOK YOUR SEAT NOW WITH JO BROMWICH  
[Contactus@algs.org.uk](mailto:Contactus@algs.org.uk)

### SPRING SHOW SATURDAY MARCH 31ST

In the Henderson Hall 11am to 1pm  
Refreshments served with a selection of cakes  
And raffle

What a difference from last year to this. On my records the temperatures in my garden reached +10° C in December and this month I have recorded +15° C! What a topsy-turvy world we live in. I suppose this is global warming? I have had leucojums (snowflakes) flowering all winter, some geraniums still blooming in the flower beds, cowslips, verbena, campanula, roses, as well as snowdrops popping up all over the garden since the start of the new year. I have noticed that several of our shrubs have started to shoot, it looks as though spring is on its way – or have I spoken too soon as colder weather is now forecast.

### **FEBRUARY QUIZ NIGHT**

Unfortunately we have had to put up the price of the tickets to £10 due to the fish and chips going up and the hall costs being increased but I am sure that you will enjoy yourselves just as much. Please order your ticket NOW through Jo Bromwich.

I have to report that several quiz night players have been bringing their own drink, whether it is alcohol or a soft drink, into the Manor House. As you know this is a licensed area and it is prohibited to bring your own drinks into the Manor House. If you do bring any bottles you will either be asked to remove them from the hall or you will have to pay £4 per bottle corkage.

### **EMAIL ADDRESSES**

If you change your email address please let me know as well on [contactus@algs.org.uk](mailto:contactus@algs.org.uk)

### **WEB SITE – [www.algs.org.uk](http://www.algs.org.uk)**

Our web site has lots of useful information and we are regularly updating the site. If you want to contact us by email use - [contactus@algs.org.uk](mailto:contactus@algs.org.uk).

Maybe you want to sell something, email us on [contactus@algs.org.uk](mailto:contactus@algs.org.uk) and we can advertise it for you or let Jane know and she can put it in the Newsletter. Don't forget not everyone has an email address

**DO YOU HAVE A PARISH COUNCIL ALLOTMENT OR ELSEWHERE IF SO PLEASE EMAIL ME TO LET ME KNOW WHERE FOR MY RECORDS.**

### **SEED ORDERS**

Wow, you really went to town with your seed orders. Thank you everyone.

If you still want to take advantage of our seed ordering service from Mr Fothergill's Seeds please let me know. Change of plan by Mr F. you can still order up to the end of February and get the 40% off seeds and 10% off all other goods and plants. After then you will only get 20% discount. All orders come to me unless you want to pay extra for the postage!

**Those of you who have ordered**, please check your orders and let ME know, NOT Mr Fothergill's if you have any problems. All seed orders were received within the week plus the garlic and autumn planting onions, and the potatoes are coming through now. Heated onions will be delivered later on. Look in your catalogues and it will tell you when the order is due.

**The new Mr Fothergill's Plant catalogues** are now in for you to order from. Obviously the earlier you order the better chance of getting your order. Use the same method as before with 10%.

### **WASTE COMPOST COMPANY**

Our trip to the Waste Company will take place on **MONDAY 28<sup>TH</sup> MAY 2012**. Up to 20 members can join the tour so please confirm you still want to go those of you who have already booked, and those of you who would you like to go please let me know on [Contactus@algs.org.uk](mailto:Contactus@algs.org.uk) ASAP. I also need to know if you require a lift. Don't forget the wellies!!!

**VISIT THE EXOTIC BUTTERFLIES AND CATERPILLARS IN THE GLASSHOUSE AT WISLEY FROM 14<sup>TH</sup> JANUARY TO 26<sup>TH</sup> FEBRUARY 10AM TO 4PM. ALSO ADVICE ON WHAT TO GROW TO ATTRACT BUTTERFLIES TO YOUR GARDEN.**

### **ALLOTMENTS FOR ABBOTS LANGLEY PARISH RESIDENTS ONLY**

Would you like an allotment to grow your vegetables on?

The season runs from October to September. You can get whole plots, ½ plots and ¼ plots. There are 3 sites – Jacketts Field (Rep Sally Sanderson), Manor House (Rep Chris Bromwich), Kingsfield (Rep Les Clarke) and Primrose Hill (in the summer). Look on the Parish Council web site for more information [www.abbotslangley-pc.gov.uk](http://www.abbotslangley-pc.gov.uk) or speak to the Reps or phone the Parish Council office on 01923 265139. May be you are already on the waiting list, don't forget to keep phoning or visiting the PC to check whether your name is nearing the top of the list,

#### **New allotment site**

It has been agreed by the Parish Council to proceed with a new site down at Primrose Hill Playing fields. Work should commence in the spring and the opening up of another site will ease the waiting list of around 2 years as well as give the opportunity to those people from that part of the parish to grow their own vegetables.

If you are interested in having an allotment in the parish please contact the Parish Council as soon as possible.

### **FLOWERS FOR ALL OCCASIONS**

For flower arrangements for any occasion at prices below the florist shops. Ideal for weddings, funerals, anniversaries, etc. contact Jo Bromwich on [contactus@algs.org.uk](mailto:contactus@algs.org.uk). Note -Jo does not provide flowers only.

### **SPRING SHOW**

Watch out for the new show schedules in the Dept, my porch, at the social evenings or on our web site.

### **RECOMMENDED INTERESTING TELEVISION PROGRAMME**

Sue Tomson watched a fascinating programme on BBC4 on Tuesday 24<sup>th</sup> January, at 8.00 p.m. given by Timothy Walker (Oxford Botanical Gardens) on Botany. There is a second programme on 31<sup>st</sup> January and there may be more in the future.

## **MANURE**

From our Depot – horse manure per bag

For delivery -

Dave Birkin - £35 for a 5 tonne load. It is a mixture of horse and cow manure and is 18 months old.

For collection – don't forget to take your fork/spade and bags

a. Mansion House stables (opposite the AL School entrance on the Bedmond Road) also provides horse manure for free to collect. You have to go there when someone is working at the stables and ask if you can take some. They usually will be pleased to see you as they have to pay to get it removed!

b. There is a house on the right hand side going down Chequers Lane, before the bridge, where you can acquire manure. Knock on the door before helping yourself.

c. There are stables run by Debbie Randall on the A405 on the same side as Burston's. Due to the dual carriage way you need to go past Burston's, over the next small roundabout to the big M10 roundabout, come back on yourself about 100yds BEFORE you reach the next small roundabout (Park Street/Tippendell Lane) the stables are on the left hand side. The stables are usually open each afternoon between 2 – 3.30pm and often on Saturday mornings. The manure is usually well matured. Note you must telephone Debbie BEFORE you go as she is not always there.

**Don't forget that our Depot is well stocked with manure in bags for you to collect. It is ideal to spread the manure now before the plants are too tall.**

## **VISIT BENNINGTON LORDSHIP TO SEE THE SNOWDROPS**

**4-26 February 12noon to 4pm** - the gardens are carpeted in a spectacular display of snowdrops around the remains of the Norman Castle and surrounding moat. Masses of Hellebores flower with Aconites and winter flowering shrubs, plus coloured stems of Acers, Cornus and Willow around the lakes. Only at Stevenage, Herts SG2 7BS

## **MEMBERSHIP RENEWALS**

**WOULD YOU LIKE TO PAY BY STANDING ORDER?** This is a much easier way of paying your subscription so please contact Myles on 262685 or myles11@talktalk.net who will give you the bank details necessary to set this up.

**REMEMBER YOU WILL BE ASKED TO SHOW YOUR MEMBERSHIP CARD WHEN PURCHASING AT THE DEPOT**

**SUBSCRIPTION RENEWALS ARE NOW DUE. PLEASE PAY YOUR £5 (put up at the AGM) AT THE DEPOT OR AT ANY OF OUR SOCIAL EVENTS BEFORE THE END OF MARCH. Thank you.**

**If you pay a postage levy, this has now been increased to £2.50 per household.**

Please will you check when paying your subscription renewals that your name is on your receipt as I will not know if you have paid. Also please let me know if you have changed your address, telephone number or email address. Many thanks.

**Those of you, who do pay by standing order**, please adjust your standing order with your bank as the subscription is now £5 per person as soon as possible. If it has already been paid please pay the extra £1 at the depot, social evening or myself. Please get a receipt for this sum. Thank you.

**OUR DEPOT STOCKS A LARGE RANGE OF WILD BIRD FOOD AND VERY REASONABLE PRICES.**

	Mixed seed	£1.00	Feeder seed	80p	
	No waste mix	£1.90	Peanuts	£2.00	
	Sunflower seeds black	£1.40	Niger seed	£1.40	
Sunflower seeds stripy	£1.30	Fat Balls	20p or Sunflower hearts	£1.90	6 for a £1

Prices can change with new stock

**We are trailing filled half coconut shells and suet pellets, if there is a demand we will get more in stock**

**Nutritional value of bird food - calories per 100g<sup>o</sup>**

Raisins	300	Niger seed	480
Black sunflower	500	Sunflower heart	600
Maize	320	Peanuts	560
No mess mix	440	Mealworms	150
High energy mix	550	Fat balls & Suet pellets	900

**DEPOT DUTIES – 8.45 to 10am**

If you make a mutually agreed swap, please don't forget to let Pat Colwell know so that he can keep an accurate record. Being on duty involves 1 hour's duty on a Saturday morning, only once or twice a year. There will always be a Committee Member on hand, to give guidance. Many hands make light work! So if you are willing to join the list of volunteers to help serve in the Depot, please let either Jane or Pat at [contactus@algs.org.uk](mailto:contactus@algs.org.uk) know and Pat can add you to the list if there is a cancellation by someone.

We have had several members forget their depot duty! Please may I remind you that if no helper's turn up it does leave the committee member very vulnerable and they may not be able to cope on their own?

**DUTY ROTA (correct at going to print)**

**February**

4 - Sue North, Peter and Adrienne Barnes  
11 – Jeremy Foster, Peter Boyce, Carol Kettle  
18 – Kate Macnish, Joanne Nottage, John Tapster  
25 – Myles Darbyshire, John and Anne Cox

**March**

3 – David Sutherland, Jean Bratley, Sally Sanderson  
10 – Chris Bromwich, Terry Bray, Oliver Reeder  
17 – Jo Bromwich, Jan Always, Roy Jenner  
24 – Pat Colwell, John Beaumont, Bella Stuart-Smith  
31 – Jane and Leon Lay, Pauline Bryant

**April**

7 – John Merry, Olive Dollard, Susan Noise  
144 – Kate Macnish, Tony and Julia Pink  
21 – Myles Darbyshire, Simon Davis, Madeleine Harris

28 – Jeremy Foster, Richard Tovell, Brian Hibberd

May

5 – Pat Colwell, Sue Douglas, Roger Sylvester

12 – Sue North, Roger Gotts, Peter Giggons

19 – David Sutherland, Joyce Davies, Susan Harris

26 – Chris Bromwich, Keith Gissing, Jerry Donaniewski,

June

2 - John Merry, Sandra Higgins, John Sutton

9 – Jeremy and Barbara Foster, Norman Meldrum

16 – Jo Bromwich, Les and Anne Whitmore

23 – Jane Lay, Eve Durtnall, Richard Gabriel

### **BIG GARDEN BIRDWATCH 2012**

Did you forget to count your birds in the garden for one hour on 28 - 29<sup>th</sup> January? I am sure many of you did as I have not seen anything about it on the television.

If you still want to take part you have until 17<sup>th</sup> February when all the information has to be in. Go on to [www.rspb.org.uk/birdwatchresults](http://www.rspb.org.uk/birdwatchresults) for more information.

### **TRANSITION TOWN EVENT**

There is to be another food event run by the organisers of the Transition Town Association, so watch out for the posters. It is certainly something not to miss even if you just want a coffee and meet people.

### **CLAY POTS**

Peter Tomson has quite a lot of clay pots of various sizes and also many Tom Thumb pots (Is that the right name for deep pots that clematis etc. are grown in). All free. Please phone before you collect.

### **FUND RAISING**

This is a most important part of our Society which gives benefits to all members in some form. Jo likes to get good speakers for our social evenings and they can be expensive, and we like to run two shows in the year, and I am sure that all of you who take part in these activities enjoy them. We were very lucky to have over £1,200 profit from the carnival stall, quiz nights and raffles last year. Please support our funding raising when you can. Thank you.

### **OUTINGS FOR 2012**

Kate is looking forward to hearing from you if you or your friends are interested on going to any of the outings. Contact Kate at [contactus@algs.org.uk](mailto:contactus@algs.org.uk)

27 April – a long weekend to Holland to The Floriade which is held once every 10 years and the biggest horticultural exhibition in the world.

23 June – a coach outing is arranged to go to RHS Wisley

## **72<sup>nd</sup> ANNUAL GENERAL MEETING**

We had 55 members attend the evening which only lasted 30minutes. This must be a record! As the formal meeting was very short we were able to enjoy, even more, the talk with amazing photographs taken by Geoff Clinton. Geoff has family out in Uganda and has visited the country several times. Lucky man! He took us to various wild life reserves and lakes and waterfalls, but of course the photos of the wonderful animals, such as the mountain gorillas (no David Attenborough was not there), chimpanzees, elephants, beautifully coloured birds, forest and many other spectacular sights were amazing. Geoff made us feel as though we were there with him as he talked about the slides. I am so glad I did not miss him.

### **YOUR 2012 COMMITTEE –**

#### **Officers-**

President (Until 2014 AGM)	Peter Tomson
Chairman	Chris Bromwich
Secretary	Jane Lay
Treasurer	Myles Darbyshire
Trading Secretary	Jeremy Foster

#### **Committee –**

Ass. Trading Sec -	Bryan Ellis
Talks Organiser/ -	Jo Bromwich
Quiz Box Office	
Depot Rota -	Pat Colwell
Tours/outings -	Kate Macnish
Carnival organiser/	
Show computer -	Sue North
Quiz compiler/	
Social Greeter -	Yvonne Merry
Quiz compiler/	
Website -	John Merry
Show Schedules/	
Raffles -	David Sutherland
Publicity -	Pam Cotton

#### **Auditor -**

- Norman Meldrum

## **WHAT TO DO IN YOUR GARDEN AT THIS TIME OF YEAR**

I could say nothing, but that is not what us gardeners do, is it?

- Pick off hellebore leaves with black blotches as this is a symptom of leaf spot disease
- Lift and divide congested snowdrops when in leaf, also known as 'in the green'

- Prepare plant supports ready to pop into position to support tall or floppy perennials, such as delphiniums
- Prune apple and pear trees to remove congested, badly placed, damaged or diseased branches
- Prepare areas for planting asparagus
- Cover seakale to force new shoots
- Raise lettuce and salad crops in pots for early pickings
- Water potted fuchsias sparingly to prevent compost drying out completely
- Bring pots of strawberries under cover to encourage early fruiting

**NEW FROM PTES (Peoples Trust for Endangered Species)**

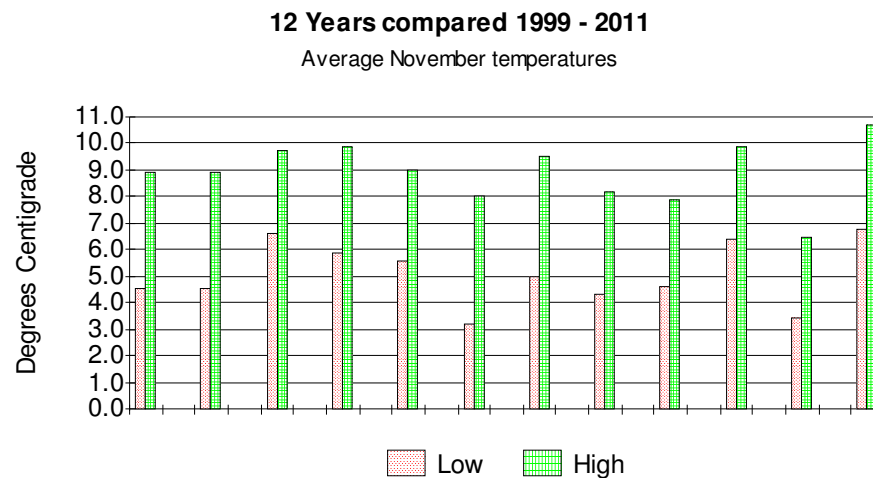
I thought you might like to hear the latest on what PTES has been up to so far this year. Please read on to find out more about their hedgehog hibernation survey.

**Hibernation Survey**

A study was conducted 40 years ago which suggested a link between climate and when hedgehogs come out of hibernation. They are now repeating the study to see if climate change has affected hedgehog hibernation patterns.

They therefore need your help to collect hedgehog **records from 1st February until 31st August 2012.**

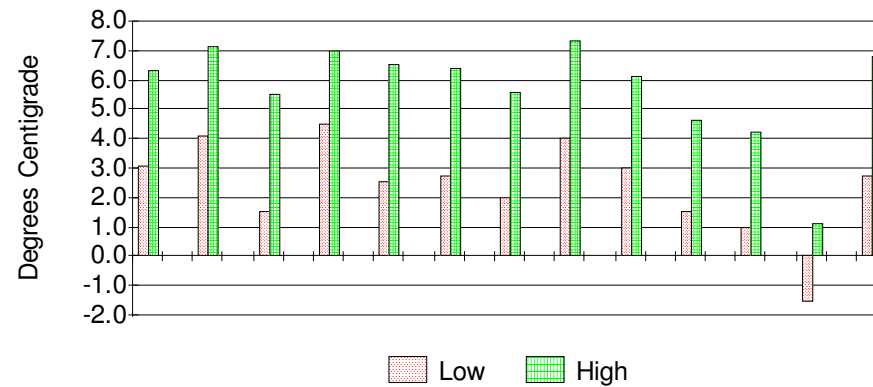
Simply tell them every time you see a hedgehog, noting its location and whether it is alive or dead. Please don't forget to stay on the look out until the end of August when all hedgehogs should be awake. Email [hedgehog@ptes.org](mailto:hedgehog@ptes.org)



The record high readings this year and the next highest of 2009 emphasise how cold it was last year. Next month (DV) I will be able to compare 13 years as these readings commenced on 24<sup>th</sup> November 1999.

### 13 Years compared 1999 - 2011

Average December temperatures



The chart tells the story. After two cold years (2010 exceptionally so), we are about mid-table this year for overnight readings, just outside the medals for the daytime results!

### PROGRAMME FOR SOCIAL EVENINGS AND OTHER EVENTS IN 2012

Held in the Manor House Sports & Social Centre, Gallows Hill Lane, Abbots Langley (opposite Popes Road)

Meetings start at 8pm (unless otherwise stated)

Doors open at 7.40pm

If you have any ideas for future talks please contact Jo Bromwich ([contactus@algs.org.uk](mailto:contactus@algs.org.uk))

**FEBRUARY 16<sup>th</sup>** John Noakes will be talking about "Flowers for the Autumn"

**FEBRUARY 24<sup>TH</sup>** QUIZ NIGHT

**MARCH 15** Terry Simmonds talking about his former garden centre "Simmonds Garden Centre" now Garden Scene in Chipperfield.

**MARCH 31<sup>st</sup>** Spring Show in the Henderson Hall

**APRIL 19<sup>TH</sup>** Daisy Roots – shady characters – plants for a shady border

**May 17<sup>TH</sup>** Andy Sands – British Wildlife Photographer – Photography on how to get the best out of your camera.

**June 9<sup>TH</sup>** Abbots Langley Carnival. Plants wanted!

**September 8<sup>th</sup>** ANNUAL GARDENING SHOW in AL Community Centre.

**September 20<sup>th</sup>** Blooming Marvellous – gardening made easier plus guided tour of nursery 23<sup>rd</sup> September

**October 18<sup>th</sup>** Ian Bond – talking about Transition Towns

**November 22<sup>nd</sup> \*** Nick Bessant – welcome Nick back to talk about US insects and wildlife

**November 30<sup>th</sup> \*** Quiz Night in Manor House

**December 20<sup>th</sup>** Andrew Babicz – talking about composting

- please note the changes in date for the November events

GUESTS ARE ALWAYS WELCOME – guest entrance £1

**Abbots Langley Travel Club 2012**

Contact Kate Macnish on [contactus@algs.org.uk](mailto:contactus@algs.org.uk)

Trip to Wisley on 23<sup>rd</sup> June.

Floriade – going with Simply Group 4 days on 27<sup>th</sup> April. Minimum of 35 people needed at £359 per person. **Urgent – need your names now.**